

South Carolina Department of Corrections Recidivism Rates of Inmates Released during FY2009 - FY2011			
	Year of Release		
	FY 2009	FY 2010	FY 2011
<b>Total Number of Releases</b>	<b>13,454</b>	<b>12,744</b>	<b>12,024</b>
Percentage of Releasees who Returned to SCDC:	Recidivism Rate by Year of Release		
	FY 2009	FY 2010	FY 2011
Within One Year or Less	11.9%	9.9%	9.5%
Within Two Years or Less	22.8%	20.5%	19.2%
Within Three Years or Less	29.4%	27.5%	25.7%
Comparison of 3-Year Recidivism Rates by Inmate Attributes			
Attributes	FY 2009	FY 2010	FY 2011
Overall Rate	29.4%	27.5%	25.7%
Gender			
Males	30.7%	28.8%	26.7%
Females	20.0%	17.0%	18.1%
Type of Release			
Maxout (Expiration of Sentence)	20.8%	21.3%	20.5%
Parole	21.9%	19.3%	20.4%
Probation	43.2%	38.4%	35.5%
Community Supervision	21.6%	16.5%	15.7%
Youthful Offender Act* - Parole	50.0%	44.9%	41.1%
Youthful Offender Act* - Maxout	37.2%	34.6%	34.1%
Age at Release			
Under 25 Years	41.1%	37.9%	35.4%
25-30 Years	28.3%	27.7%	25.1%
31-40 Years	25.9%	24.7%	22.6%
Over 40 Years	23.5%	21.1%	21.4%
Program Participation			
Pre-Release	25.7%	23.0%	20.8%
Work Program	22.9%	21.8%	18.8%
Labor Crew	23.1%	21.1%	19.8%
Labor Crew/Work Program	23.2%	21.0%	19.8%
Prison Industry	19.7%	18.3%	18.3%
Sentence Type			
Youthful Offender Act*	49.0%	44.0%	40.2%
Straight-time	26.4%	25.0%	23.6%
Criminal History **			
Had Conviction and/or Commitment	31.4%	29.1%	27.4%
Had Commitment	32.9%	31.2%	29.8%
No Known Priors	25.7%	24.5%	22.9%

\* Youthful Offender Act (YOA) inmates serve an indeterminate sentence of 1 to 6 years.

South Carolina Department of Corrections Profile of Inmates in Institutional Count (Including Inmates on Authorized Absence) as of June 30, 2014			
Characteristics	Male Population	Female Population	Total Population
<b>TOTAL Inmates Population</b>	<b>20,488</b>	<b>1,416</b>	<b>21,904</b>
Current Age			
Average Current Age	37.0	37.9	37.0
21 & Under	1,171 (6%)	50 (4%)	1,221 (6%)
22-25	2,676 (13%)	130 (9%)	2,806 (13%)
26-35	6,810 (33%)	474 (33%)	7,284 (33%)
36-55	8,162 (40%)	675 (48%)	8,837 (40%)
56 and Over	1,669 (8%)	87 (6%)	1,756 (8%)
Average Age at Admission	31.4	34.1	31.5
Race			
Black	13,379 (65%)	532 (38%)	13,911 (64%)
White	6,528 (32%)	854 (60%)	7,382 (34%)
Other	581 (3%)	30 (2%)	611 (3%)
Citizenship			
Aliens	485 (2%)	18 (1%)	503 (2%)
Citizens	20,002 (98%)	1,398 (99%)	21,400 (98%)
Sentencing Data/Criminal History			
Admission Type:			
New	16,509 (81%)	1,260 (89%)	17,769 (81%)
Revocator	3,782 (18%)	151 (11%)	3,933 (18%)
Other	197 (1%)	5 (0%)	202 (1%)
With Current Violent Offense	13,221 (65%)	708 (50%)	13,929 (64%)
With Prior Criminal History	12,518 (61%)	635 (45%)	13,153 (60%)
With Prior Commitments	9,005 (44%)	416 (29%)	9,421 (43%)
Average Sentence Length in Years 1	13.7	9.4	13.4
Average Time to Serve before Maxout 2	6.0	4.0	5.8
Sentences One Year or Less (excl. YOA)	595 (3%)	105 (7%)	700 (3%)
Sentences More than 20 years (excl. lifers)	3,278 (16%)	139 (10%)	3,417 (16%)
With Life Sentence	2,126 (10%)	87 (6%)	2,213 (10%)
With YOA/Juvenile Sentence	723 (4%)	32 (2%)	755 (3%)
On Death Row	45 (0%)	0 (0%)	45 (0%)
Non-Parolable (includes TIS inmates)	10,705 (52%)	549 (39%)	11,254 (51%)
TIS Sentences	10,469 (51%)	547 (39%)	11,016 (50%)
Special Needs			
With Children 3	13,379 (65%)	1,104 (78%)	14,483 (66%)
With Convicted Disciplinaries in Last 12 Months	7,140 (35%)	284 (20%)	7,424 (34%)
With Victim Witness Indicator	12,696 (62%)	732 (52%)	13,428 (61%)
Sex Registry	3,338 (16%)	38 (3%)	3,376 (15%)
Required DNA Testing	20,149 (98%)	1,325 (94%)	21,474 (98%)
Chemical Dependent per SASSI/TCUDDS 4	7,765 (38%)	773 (55%)	8,538 (39%)
Education/Work			
Average Education Level at Intake	10.5	11.0	10.6
Without HS/GED	11,230 (55%)	622 (44%)	11,852 (54%)
Leading Most Serious Offense 5			
Homicide	17%	20%	17%
Dang. Drugs	17%	17%	17%
Burglary	16%	10%	15%
Robbery	14%	8%	13%
Sexual Assault	8%	7%	7%
Top Five Committing Counties			
Spartanburg	9%	11%	9%
Greenville	9%	11%	9%
Richland	9%	8%	8%
Charleston	7%	7%	7%
Horry	6%	6%	6%
Mental Health Classification			
No Mental Health Problem	17,605 (86%)	880 (62%)	18,485 (84%)
Mentally Retarded	22 (0%)	3 (0%)	25 (0%)
Mentally Ill	2,628 (13%)	473 (33%)	3,101 (14%)
Not Available/Unknown	233 (1%)	60 (4%)	293 (1%)

<sup>1</sup> Excludes Lifers, Death-Row & YOA's

<sup>2</sup> Include inmates to be released to Community Supervision under Truth-in-Sentencing, excludes Lifers, Death-Row and YOA's

<sup>3</sup> Based on inmate self-reported information at intake

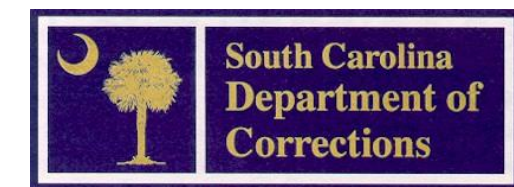
<sup>4</sup> Substance Abuse Subtle Screening Inventory (SASSI) stopped being used in January 1997. Currently Texas Christian University Drug Dependency Screen (TCUDDS) is used.

<sup>5</sup> To facilitate statistical reporting, SCDC determines a single "most serious offense" (MSO) for each inmate. Before August 2005, the offense with the longest sentence determined MSO. Effective August 2005, inmates' MSO is the offense with the highest severity level (i.e. offenses are classified between severity level 1 and 5, with 5 as the most severe). In cases where an inmate has multiple offenses at the same severity level, SCDC considers the category of each offense, where homicide offenses take precedence, followed by sex offenses and violent offenses. If multiple offenses exist within the same category, the offense with the longest sentence then determines MSO. Because of this definitional change, post-2005 MSO data cannot be compared to pre-2005 MSO data.

Note: Percentages may not add up due to rounding.

# THE SOUTH CAROLINA DEPARTMENT OF CORRECTIONS

**BRYAN P. STIRLING**  
DIRECTOR



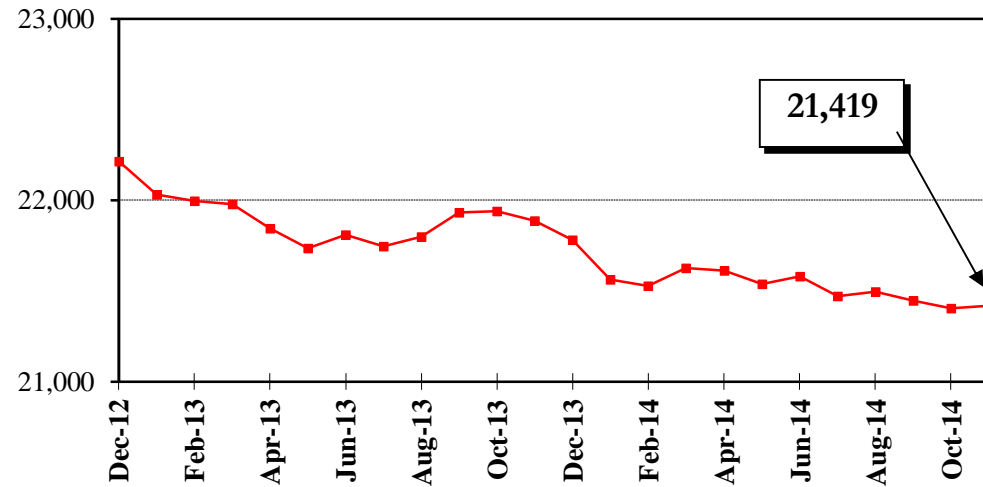
## SCDC FAQs DECEMBER 2014

For further information, contact:  
South Carolina Department of Corrections  
Resource and Information Management  
4444 Broad River Road  
Columbia, SC 29210  
(803) 896-8526

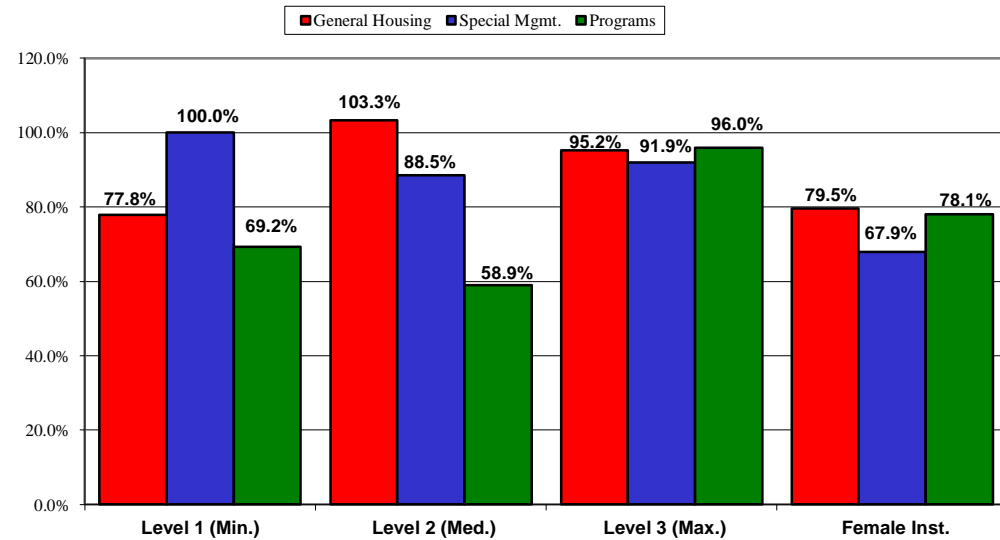
This document is available in alternative formats  
by contacting the number above.

This report contains preliminary statistics.  
Changes/updates will be posted on the SCDC website  
[www.doc.sc.gov](http://www.doc.sc.gov).

### SCDC Average Daily Facility Count per Month December 2012 – November 2014



### Bedspace Utilization Rates by Housing Type November 15, 2014



Average Daily Inmate Population Fiscal Year 2008 - 2014					
Fiscal Year	SCDC Facilities	Other <sup>1</sup>	SCDC Jurisdiction	Change over Last Year	% Change over Last Year
2008	23,889	748	24,637	499	2.1%
2009	24,017	717	24,734	97	0.4%
2010	24,040	670	24,710	-24	-0.1%
2011	23,293	646	23,939	-771	-3.1%
2012	22,711	623	23,334	-605	-2.5%
2013	22,088	592	22,680	-654	-2.8%
2014	21,712	603	22,315	-365	-1.6%

<sup>1</sup> Other Placements = Special Placements + Designated Facilities

### Admissions to SCDC Fiscal Years 2012 - 2014

ADMISSIONS	FY 2012		FY 2013		FY 2014	
	#	%	#	%	#	%
<b>NEW ADMISSIONS FROM COURT</b>	<b>7,966</b>	<b>78.3%</b>	<b>7,785</b>	<b>81.40%</b>	<b>7,540</b>	<b>82.53%</b>
Indeterminate Sentence (YOA)*	646	6.4%	625	6.50%	608	6.65%
Straight Sentence (Non-YOA)	7,280	71.6%	7,121	74.40%	6,896	75.48%
Other Jurisdiction	40	0.4%	39	0.40%	36	0.39%
<b>PROBATION REVOCATIONS***</b>	<b>1,213</b>	<b>11.9%</b>	<b>1,008</b>	<b>10.50%</b>	<b>932</b>	<b>10.20%</b>
<b>PAROLE REVOCATIONS</b>	<b>746</b>	<b>7.3%</b>	<b>638</b>	<b>6.70%</b>	<b>472</b>	<b>5.20%</b>
Youthful Offender Act (YOA)	413	4.1%	298	3.10%	236	2.58%
NON-YOA	333	3.3%	340	3.60%	236	2.58%
<b>ISS REVOCATIONS</b>	<b>N/A</b>	<b>N/A</b>	<b>7</b>	<b>0.10%</b>	<b>70</b>	<b>0.00%</b>
<b>SUPERVISED RE-ENTRY REVOCATIONS</b>	<b>N/A</b>	<b>N/A</b>	<b>1</b>	<b>0.10%</b>	<b>7</b>	<b>0.00%</b>
<b>SF/EPA REVOCATIONS</b>	<b>9</b>	<b>0.1%</b>	<b>1</b>	<b>0.10%</b>	<b>0</b>	<b>0.00%</b>
<b>COMMUNITY SUPV. REVOCATIONS</b>	<b>192</b>	<b>1.9%</b>	<b>109</b>	<b>1.10%</b>	<b>108</b>	<b>1.18%</b>
<b>RE-SENTENCED</b>	<b>41</b>	<b>0.4%</b>	<b>19</b>	<b>0.20%</b>	<b>6</b>	<b>0.07%</b>
<b>DEATH ROW</b>	<b>0</b>	<b>0.0%</b>	<b>0</b>	<b>0.00%</b>	<b>1</b>	<b>0.01%</b>
<b>OTHER **</b>	<b>3</b>	<b>0.0%</b>	<b>1</b>	<b>0.00%</b>	<b>0</b>	<b>0.00%</b>
<b>TOTAL ADMISSIONS</b>	<b>10,170</b>	<b>100.0%</b>	<b>9,561</b>	<b>100.00%</b>	<b>9,136</b>	<b>100.00%</b>

All percentages rounded where possible.  
 \*The Youthful Offender Act provides for indeterminate sentences of 1- 6 years for offenders aged 17-25.  
 \*\* These inmates include appeal bond denied, ICC, and other state inmates.  
 \*\*\* Death Row admissions figures represent placements to death row, includes new admissions, resentenced and returned inmates.  
 \*\*\*\* Includes only those inmates released to probation from SCDC.

### Most Serious Offense of SCDC Admissions Fiscal Years 2012 - 2014

OFFENSE CLASSIFICATION	FY 2012	FY 2013	FY 2014
DANGEROUS DRUGS	18.4%	19.3%	19.6%
BURGLARY	16.3%	16.7%	16.5%
ASSAULT	8.9%	8.6%	8.8%
LARCENY	7.8%	8.7%	8.6%
TRAFFIC OFFENSE	7.6%	6.9%	6.9%
ROBBERY	6.5%	6.2%	6.1%
FAMILY OFFENSE	5.1%	5.2%	5.1%
ALL OTHERS	29.4%	28.4%	28.4%
<b>TOTAL ADMISSIONS</b>	<b>10,170</b>	<b>9,569</b>	<b>9,136</b>

\* Highlighted areas indicate most common offenses for each fiscal year. Inmates often are committed to SCDC with many offenses, with each carrying a specific sentence, county of commitment, etc. To facilitate statistical reporting, SCDC determines a single "most serious offense" (MSO) for each inmate. Inmates' MSO is the offense with the highest severity level (i.e. offenses are classified between severity level 1 and 5, with 5 as the most severe).

### Average Sentence Length of SCDC Admissions Fiscal Years 2012 - 2014

	FY 2012	FY 2013	FY 2014
<b>Average Sentence Length</b>	<b>4 Yrs. 0 Mos.</b>	<b>4 Yrs. 1 Mos.</b>	<b>4 Yrs. 3 Mos.</b>

\* This average does not include inmates with life, death, YOA sentences and inmates released on paid fine, remanded appeal, court order, pardon, resentenced, or death.

### Time Served by SCDC Inmates Released Fiscal Years 2012 – 2014

TIME SERVED	FY 2012		FY 2013		FY 2014	
	#	%	#	%	#	%
3 Months or Less	1,203	10.5%	1,073	11.2%	850	11.2%
3 Months 1 Day-6 Months	1,892	16.6%	1,490	15.5%	1,413	15.5%
6 Months 1 Day-9 Months	1,271	11.1%	1,097	11.4%	1,222	11.4%
9 Months 1 Day-1 Year	1,406	12.3%	1,141	11.9%	932	11.9%
1 Year 1 Day-5 Years	4,426	38.8%	3,720	38.7%	3,824	38.7%
5 Years 1 Day-10 Years	820	7.2%	725	7.5%	779	7.5%
10 Years 1 Day-15 Years	277	2.4%	243	2.5%	276	2.5%
15 Years 1 Day-20 Years	71	0.6%	88	0.9%	119	0.9%
20 Years 1 Day-25 Years	25	0.2%	15	0.2%	29	0.2%
25 Years 1 Day-30 Years	12	0.1%	9	0.1%	25	0.1%
Over 30 Years	6	0.05%	22	0.2%	16	0.2%
<b>TOTAL RELEASES</b>	<b>11,409</b>	<b>100.0%</b>	<b>9,623</b>	<b>100.0%</b>	<b>9,485</b>	<b>100.0%</b>
<b>Average Time Served</b>	<b>2 Years 1 Months</b>		<b>2 Years 2 Months</b>		<b>2 Years 5 Months</b>	

This average does not include inmates with life, death, YOA sentences and inmates released on paid fine, remanded appeal, court order, pardon, resentenced, or death.

### Releases from SCDC by Type Fiscal Years 2012 - 2014

RELEASES	FY 2012		FY 2013		FY 2014	
	#	%	#	%	#	%
EXPIRATION OF SENTENCE/ LESS GOOD TIME	5,924	51.9%	4,751	49.4%	4,416	0.0%
MAXOUT - YOA	123	1.1%	91	0.9%	80	0.8%
PLACED ON PROBATION	2,455	21.5%	2,132	22.2%	2,069	21.8%
PAROLED TO INTENSIVE SUPERVISION SERVICES*	N/A	N/A	N/A	N/A	606	6.4%
PAROLED BY YOA PAROLE BOARD**	1,049	9.2%	879	9.1%	268	2.8%
PAROLED BY DPPPS***	547	4.8%	490	5.1%	431	4.5%
RE-SENTENCED	32	0.3%	16	0.2%	11	0.1%
COMMUNITY SUPERVISION	1,192	10.4%	1,111	11.5%	1,188	12.5%
SUPERVISED RE-ENTRY	0	0.0%	61	0.6%	312	3.3%
DEATH	61	0.5%	61	0.6%	78	0.8%
DEATH-EXECUTED	0	0.0%	0	0.0%	0	0.0%
RELEASED TO EPA	0	0.0%	0	0.0%	0	0.0%
OTHER ****	26	0.2%	31	0.3%	26	0.3%
<b>TOTAL RELEASES</b>	<b>11,409</b>	<b>100.0%</b>	<b>9,623</b>	<b>100.00%</b>	<b>9,485</b>	<b>100.00%</b>

\* Intensive Supervision Administrative Release Authority (ISARA) assumed YOA Parole Board duties on February 1, 2013  
 \*\* The Youthful Offender Act provides for indeterminate sentences of 1 - 6 years for offenders aged 17 - 25.  
 \*\*\* Department of Probation, Parole, and Pardon Services.

South Carolina Department of Corrections Cost Per Inmate* Fiscal Years 2010-2014				
Fiscal Year	Based on State Funds Spent		Based on All Funds Spent***	
	Annual Cost Per Inmate	Daily Cost Per Inmate	Annual Cost Per Inmate	Daily Cost Per Inmate
2010	\$14,445 **	\$39.58 **	\$15,963	\$43.73
2011	\$14,409 **	\$39.48 **	\$16,406	\$44.95
2012	\$15,316	\$41.85	\$17,343	\$47.38
2013	\$16,542	\$45.32	\$18,299	\$50.13
2014	\$17,357	\$47.55	\$19,137	\$52.43

\*Calculation of the SCDC per inmate costs is based on the average number of inmates in SCDC facilities and a small number of authorized absences and does not include state inmates held in designated facilities, institutional diversionary programs, or other non-SCDC locations.]

\*\*In FY 2010 and FY 2011 SCDC received \$22,000,000 and \$40,480,008, respectively, from funds distributed to the states via the American Recovery and Reinvestment Act (ARRA) of 2009. These funds are included in the State Fund figures shown above. The FY 2010 cost figures have been revised from previous postings.

\*\*\*State, Federal and Special Revenues (Excludes Permanent Improvement, Purchases for Resale, Canteen, Prison Industries, Improvement Enterprise Funds, and Interest and Principle Payments)

Based on 365 days per year, except leap year when 366 days are used.